

FILENAME: Z:\PROJECTS\313283 - TOL - REVELLER PROJECT\07\HAH DRAWINGS\02 CAD\02 ELECTRICAL\313283-HAH-01-XX-D-E-06053.DWG | PLOTTED DATE: 29 October 2025 09:35:44

ALL GREYED ITEMS ARE OUTSIDE THE SCOPE OF THIS DRAWING

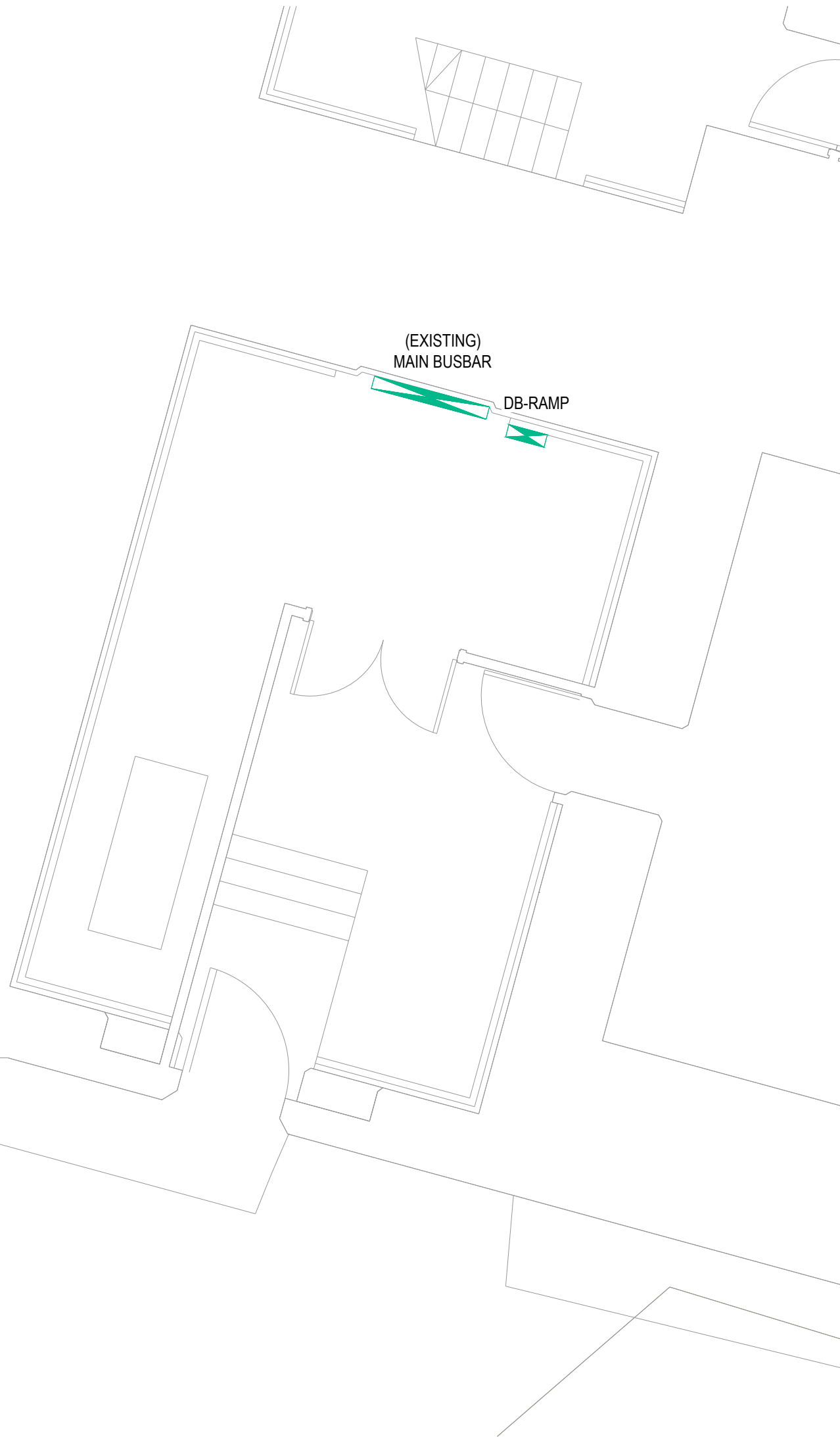
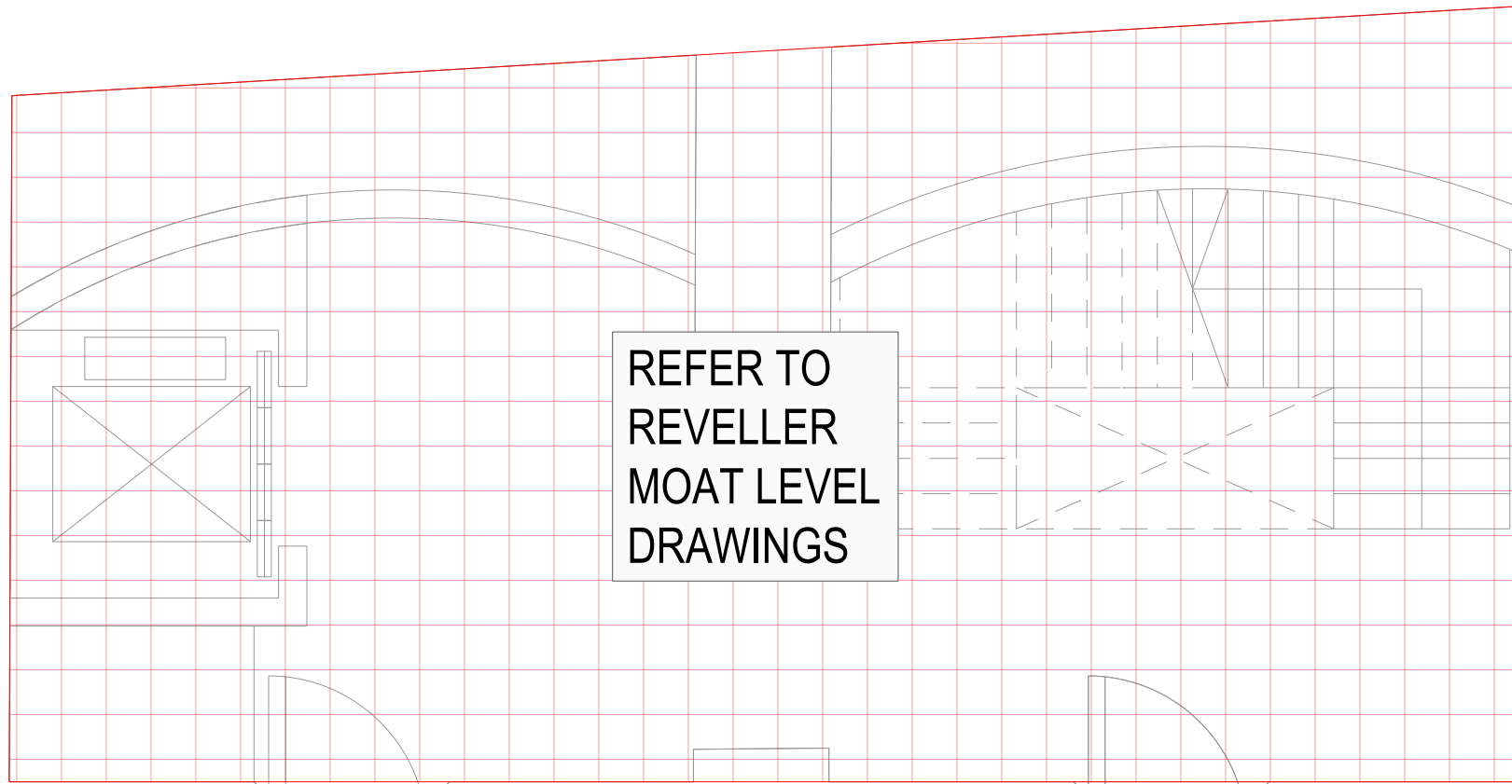
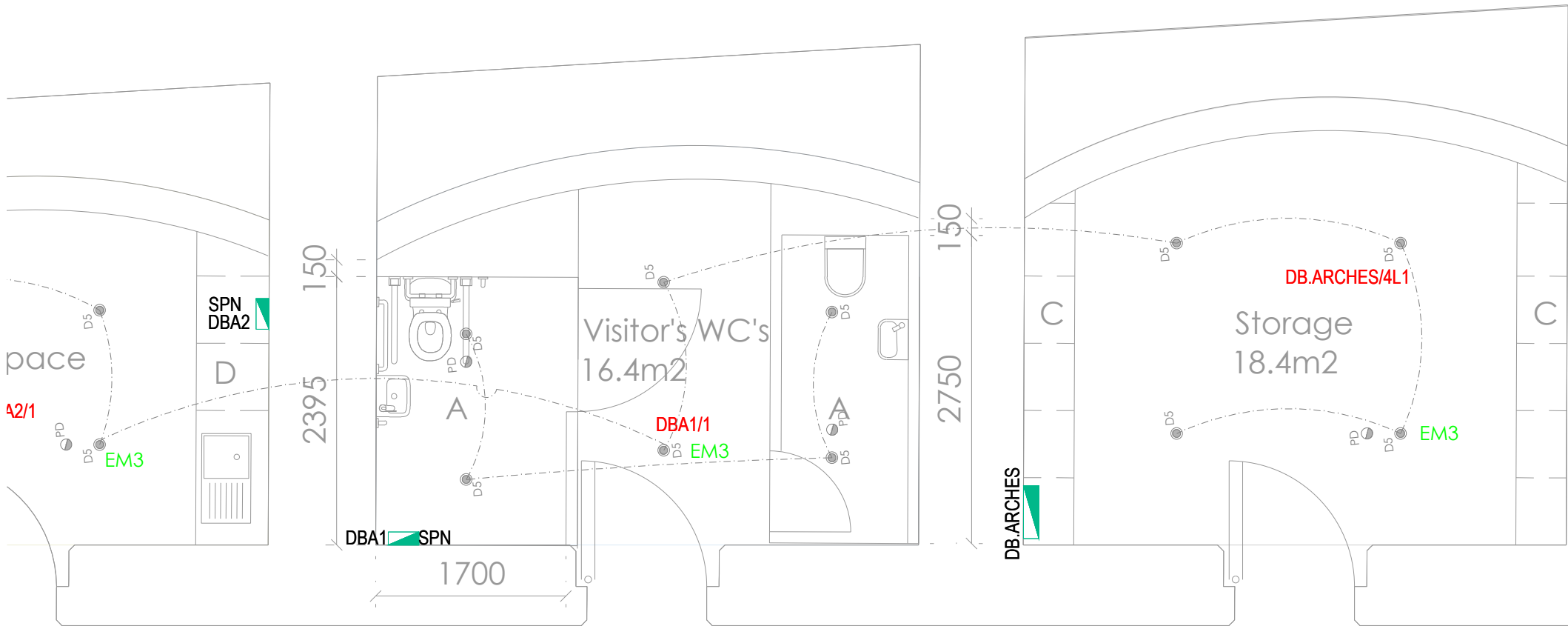
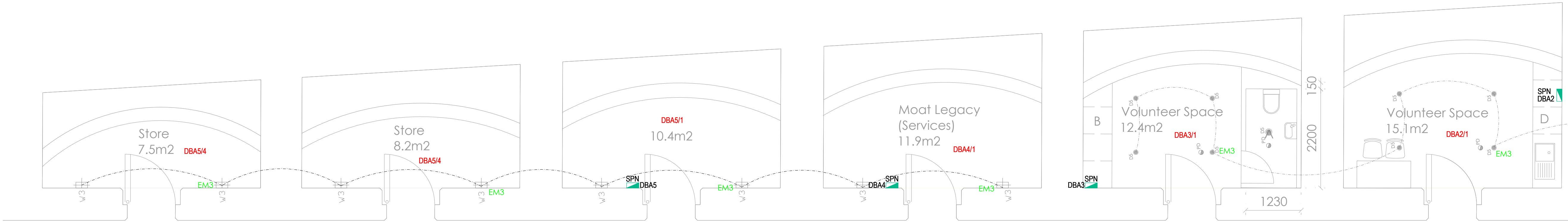
THIS DRAWING IS INDICATIVE AND REPRESENTS ONLY THE DESIGN INTENT, THE CONTRACTOR MUST PRODUCE FULLY CO-ORDINATED WORKING / INSTALLATION DRAWINGS AS REFERRED TO IN THE CONTRACT DOCUMENTATION

NOTES

- DO NOT SCALE FROM THIS DRAWING. ALL DIMENSIONS INDICATED ARE IN MILLIMETRES.
- THIS IS NOT A CONSTRUCTION DRAWING.
- DRAWING TO BE READ IN CONJUNCTION WITH SPECIFICATION, DOCUMENTATION, DRAWINGS & ALL RELEVANT BRITISH STANDARD DOCUMENTS
- 3 HOUR EMERGENCY LIGHTING BACK UP PACKS TO BE INSTALLED AS REQUIRED IN ACCORDANCE WITH BS 5266-1.
- ALL ELECTRICAL WORKS SHALL COMPLY WITH 18TH EDITION IET WIRING REGS BS7671:2018-A2 (2022), INCLUDING ALL CURRENT AMENDMENTS AND GUIDANCE NOTES AND THE CURRENT BUILDING STANDARDS REGULATIONS.
- THE INSTALLATION SHALL ONLY BE CERTIFIED BY A PERSON OR A COMPANY HAVING MEMBERSHIP TO S.E.L.E.C.T. OR N.I.C.E.I.C. OR SIMILAR ELECTRICAL SCHEMES.
- THIS DRAWING IS NOT TO BE SCALED, FIGURED DIMENSIONS ONLY TO BE TAKEN.
- ELECTRICAL ACCESSORY POSITIONS ARE INDICATIVE ONLY. ELECTRICAL CONTRACTOR TO REFER TO JFA ARCHITECTS SETTING OUT DRAWINGS FOR EXACT DIMENSIONS / LOCATIONS.
- PLEASE REFER TO PJC LIGHTING DRAWINGS FOR ALL TECHNICAL DETAILS RELATING TO THE GENERAL LIGHTING SCOPE.
- PLEASE REFER TO THIS DRAWING FOR TECHNICAL DETAILS RELATED TO THE EMERGENCY LIGHTING SCOPE.

LEGEND

- EM3 EMERGENCY CONVERSION FITTING
- EM3 TRACK MOUNTED EMERGENCY FITTING
- EM3 RECESSED SPOT LIGHT EMERGENCY FITTING
- EXIT EMERGENCY EXIT SIGN



P05	DRAFT TENDER ISSUE	TG	JR	AJ	29.10.25
P04	STAGE 4B UPDATE	TG	JR	AJ	18.07.25
P03	STAGE 4B ISSUE	JG	JR	AJ	13.06.25
P02	STAGE 4A ISSUE	JG	JR	AJ	04.04.25
P01	STAGE 3 UPDATE	JG	JR	AJ	16.12.24
REV	DESCRIPTION	BY	CHK	APP	DATE

Project Status: DRAFT TENDER ISSUE

ENGINEERING POWERED BY THE PAST  
BUILDING THE FUTURE

**h**  
HARLEY HADDOW

Unit A2, Hatchers Yard  
9 Tanner Street  
London, SE1 3LE  
T 44 (0) 203 755 5060  
www.harleyhaddow.com

Project: 313293  
TOWER OF LONDON  
REVELLER

Drawing Title:  
THE ARCHES  
LIGHTING

Scale @ A1 1:50	Date JULY 2024	Engineer JG/JR
Drawing No. 313293-HAH-01-XX-D-E-06053	Revision P05	